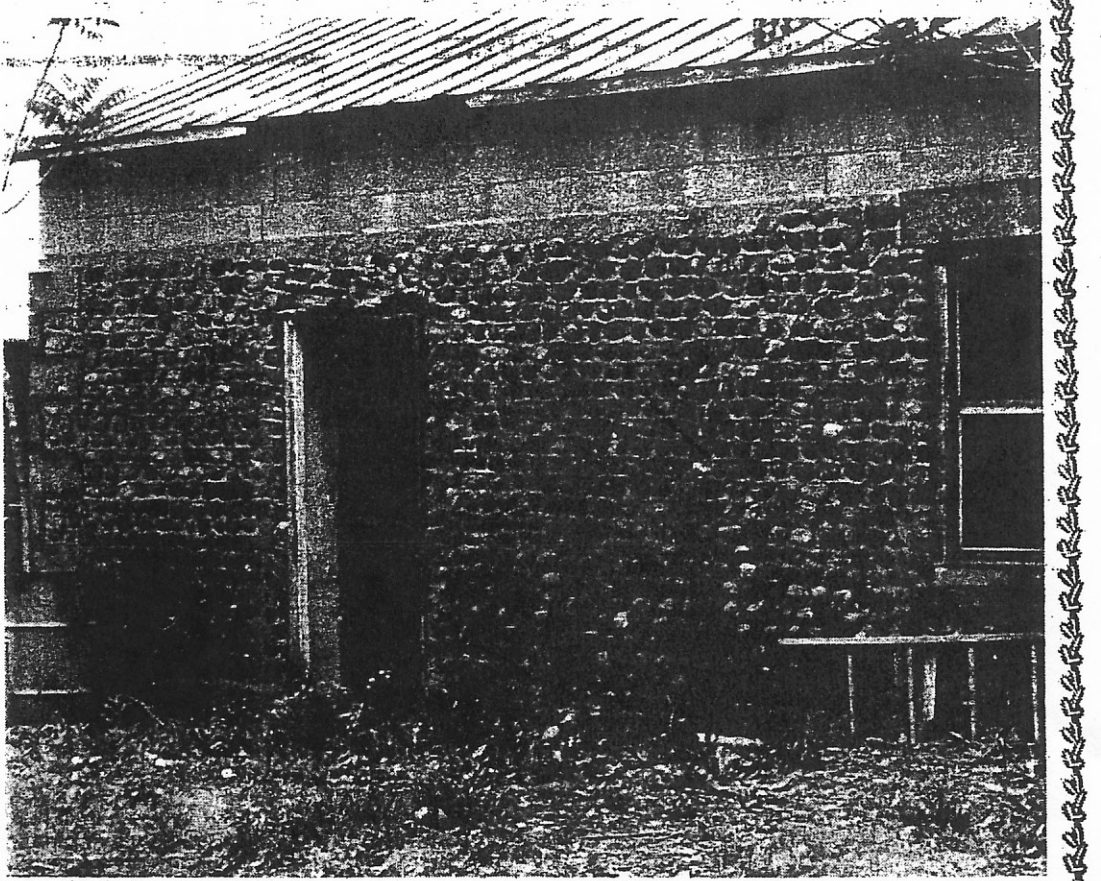


This article
was written
about
30 yrs
ago



CLARKSON CORNER COBBLESTONE--Although the front has been altered, the garage just south of the Clarkson Town Hall on Lake Rd. is a cobblestone dating to around 1830. Currently, it is used by the town for storage.

After many
attempts
to save the
building. It
was decided
by several
experts that
it had been
changed so
much from the
original that
grants would
be unavailable.
The price tag of
1/2 million
for a starter to
secure the
building was
an impossible
task for the Town especially since it would carry the whole
burden. L. Hale

reveals a time period by his workmanship and trowel marks, even when laying up walls for outbuildings.

In this case, the material used is not a drawback to anonymity. These tell-tale signs help to compute the approximate years the wall was erected.

But deep into our 20th century, we must admit a chance for error!

One local specimen is at Clarkson Corners, where early brick dwellings in the immediate surrounding area took precedence over the cobblestone wall.

Directly across the road from the Clarkson Post Office, an original cobblestone blacksmith shop was noticed by the author's wandering eye. It is a rough form of cobblestone, characteristic of the early period.

Upon study, we shall find that the mason used large cobblestones which only allowed space for two or three

courses to a quoin. But there is not an overall crudeness or a complement of flat stones so indicative of the early period. In fact, the wall facing the south is more exacting than the north wall.

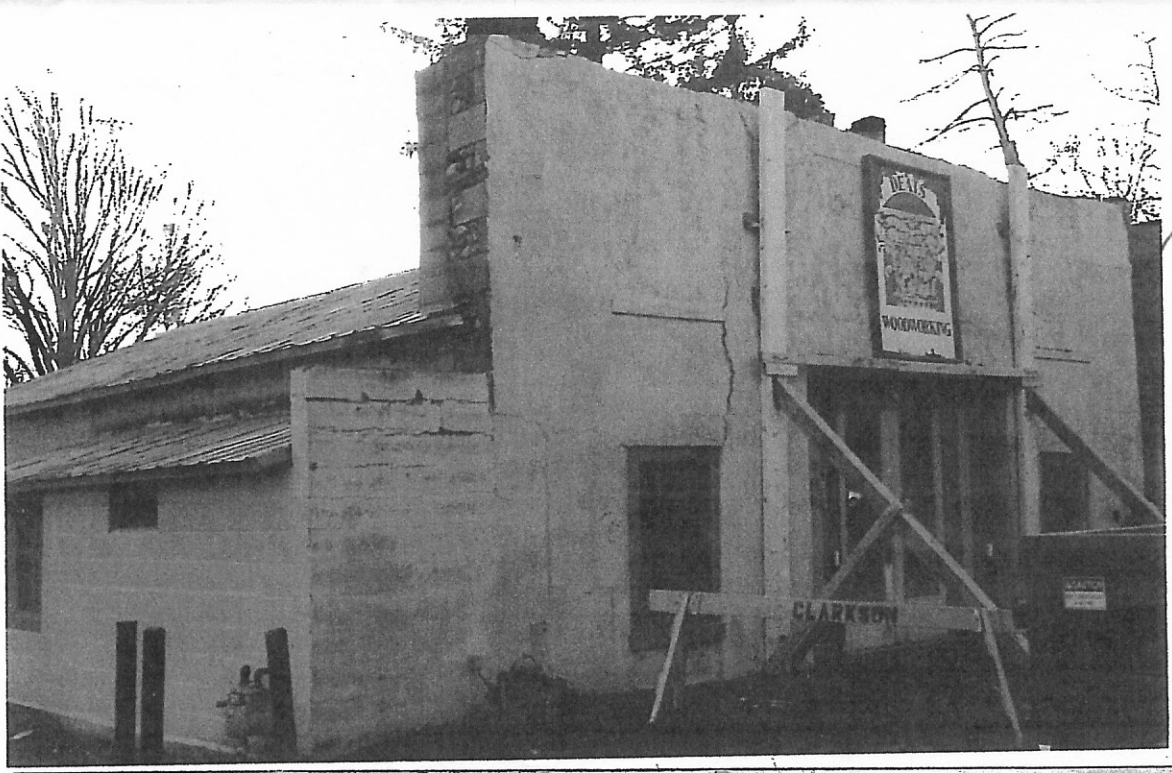
It is obvious that the mason was engaged in a functional task, yet he troweled crude mortar joints from the middle of the north wall upwards, leaving the bottom portion to the ground void of extra workmanship. So, we have a touch of both periods -- Early and Middle!

We date the building as being constructed in the 1830's or middle period work.

Nonetheless, Ray Tuttle says the building was a carriage shop before the turn of the century, operated (in order) by Flagler and Oeljh; Will and Harley Hamil; and Hixon and Costello.

During the 40's and 50's, it was an auto repair shop run by Burton Earley. At present, the Corner's only cobblestone edifice, long since bearing

periodic repairs with non-related materials is owned by the town and used for storage.



2nd
story
removed
in
1950s



600-5-3-2009



